

# USE LIBRARY SEARCH

Use our Library Search tool to explore our collections. Search online and print resources using Library Search.

The library online is at:  
<https://library.fxplus.ac.uk>

Exeter students should visit:  
<https://www.exeter.ac.uk/library> to search Exeter online resources.

# FINDING HELP

Ask the library: online chat service available via the website.

Book a librarian: service enables you to book an appointment with one of our librarians.

If you are on campus, there are help desks at each campus library. Just ask!

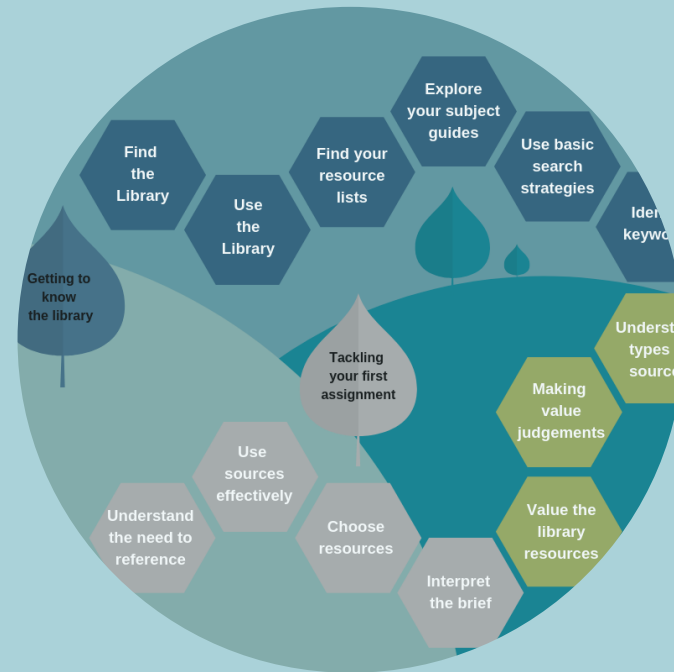
# STUDY SPACES

There are a range of study spaces in both libraries from group study rooms, silent rooms and quiet study spaces, to open plan areas with WiFi throughout.

See the website for information about booking spaces.

# LIBRARY PATHWAY FOR NEW STUDENTS

If you are new to the library or lacking confidence in using our services have a look at our Library Pathway for new users. You can watch videos, listen to podcasts or read about how to use our library to help you with your research. Find it on the Studyhub (see below)



# STUDYHUB

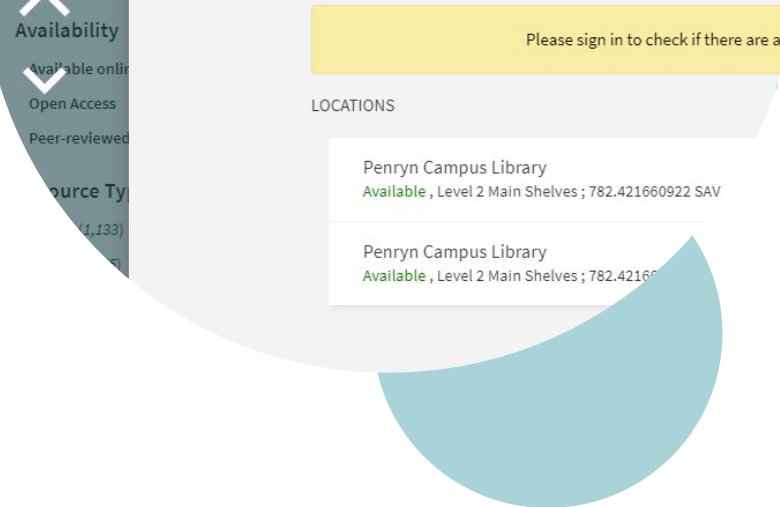
[STUDYHUB.FXPLUS.AC.UK](https://STUDYHUB.FXPLUS.AC.UK)

If you want to develop your research and study skills the Studyhub provides study guides and information about support available. You might want to look at the following sections before starting your research.

- RESEARCH AND FINDING INFORMATION
- DIGITAL LITERACY
- REFERENCING
- ASSIGNMENT CALCULATOR

# GET STARTED IN THE LIBRARY!

This guide provides information to help you get start using the library.



# ACCESSING RESOURCES

**Online access to resources:** You will need your network username and password. If you have any issues, contact the IT Service desk at [servicedesk@fxplus.ac.uk](mailto:servicedesk@fxplus.ac.uk)

**On campus access to resources:** On campus you will need your student card which doubles as a library card.

# SUBJECT GUIDES

Explore the subject guides on the library website. These have been created to help you explore resources relevant to your area of study. Meet your subject librarian who can offer support with your research. Your subject guides provide a gateway to research.

# RESOURCE LISTS

Visit your resource lists in the Learning Space to start exploring your recommended reading. These show the resources that you are expected to use for your course. The lists link directly to resources so you don't have to search for them. Sometimes there will be a week by week breakdown, containing extracts from books, journal articles or websites you need to read, or videos to watch.

Exeter students will find their resource list in ELE.



## FIND YOUR LIBRARY

Your library can be found online and on campus, with online and physical collections and services to support all your research needs.

<https://library.fxplus.ac.uk>

Twitter: @FXLibrary

facebook: FXLibrary

Instagram: @fxunilibrary

## CAMPUS LIBRARIES

### PENRYN CAMPUS

Penryn Campus Library is located in the Exchange building and is open 24/7 in term time.

An extensive collection including over 100,000 books, a wide range of journals, video and DVD collections.

The University of Exeter Penryn Campus collections, which are fully available to Falmouth students, staff, and researchers.

### FALMOUTH CAMPUS

Falmouth Campus Library is located near the Woodlane entrance. Please visit the website for opening hours.

Discover wide-ranging collections including 50,000 books. This is an eclectic collection with a wealth of resources built up over many years specialising in art, fashion and graphic design.

Your student card doubles as your library card. Remember to bring it with you if you visit.

Check the library website for current service updates and the latest opening hours.

Use the library chat service **ASK THE LIBRARY** if in doubt about anything.